

WinFrog Device Group:	Speed Log
Device Name/Model:	RDI PD0
Device Manufacturer:	Teledyne RD Instruments 14020 Stowe Drive Poway Ca USA 92064 858 842 2600
Device Data String(s) Output to WinFrog:	PD0 Format (binary) See publication <u>Workhorse Commands and Output Data Formats</u>
WinFrog Data String(s) Output to Device:	None
WinFrog Data Item(s) and their RAW record:	SPEED LOG 402 HEADING 408, 409, or 410 ATTITUDE 413 ROVDATA 496

DEVICE DESCRIPTION:

The RDI is a Doppler velocity log (DVL). If placed on a fish, the data can be used to enhance the performance of USBL positioning of the fish. The DVL must be bottom tracking for the data to be used for USBL position enhancement.

The telegram WinFrog expects is the PD0 binary telegram as described in the RDI publication Workhorse Commands and Output Data Formats.

Note: If the input is determined to be a PD3, PD4 or PD5 message, WinFrog will report this in the I/O Device window along with the time of message reception, but will not decode the message.

Not all the available data is decoded. The I/O Device window displays that data which is decoded along with some derived values. The main derived value is the altitude which is calculated from the vertical range for each beam weighted by the bottom-track percent of good data value. Other derived data include status checks on the acceptability of the data.

WinFrog only supports two Coordinate Transformation processes (EX-Command):

- SHIP COORDINATES
- EARTH COORDINATES

The INSTRUMENT and NO TRANSFORMATION configurations are not supported. Refer to the RDI instrument manual to set one of these coordinate types.

The device configuration allows you to change the sign of each value output by the instrument. WinFrog's sign convention is as follows:

For Velocities in Ship Coordinates:
Forward is positive
Starboard is positive.
Up/Down is currently not used.

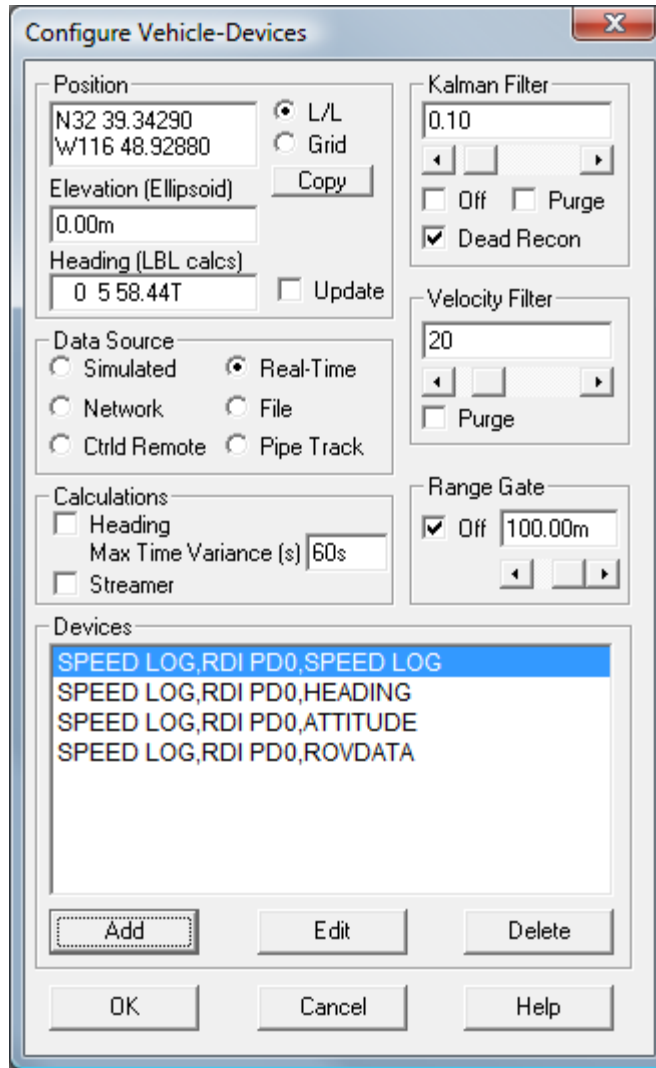
For Velocities in Earth Coordinates:
North is positive
East is positive.
Up/Down is currently not used.

Depth is positive down.

Altitude is positive up.

For Attitude:
Pitch is positive bow up.
Roll is positive starboard down.

WinFrog is able to utilize the data from Doppler speed log in the position Kalman Filter to enhance results, specifically for positioning an ROV with USBL. It is critical that the device is set up correctly, and monitored, in order to ensure correct application of the data. It is also important to note that only the *Speed over Ground* data is used in the Kalman Filter. The Kalman Filter is under the Vehicle Text Window/Configure Vehicle Devices for each vehicle. See the Configure Vehicle-Devices dialog box below.



The application and monitoring of the Doppler speed log is detailed in the following sections. **It is important to note that the values and limits stated here for any of the configurations discussed are guidelines. You must evaluate the actual performance and make adjustments accordingly.**

Background on Filtering and Gyro Input

General Kalman Filtering:

The Kalman Filtering performed by WinFrog allows the direct input (to the filter) of position and velocity data. The application of this data within the filter is a balance between:

- the accuracy attributed to each individual data type, and,
- the Kalman Filter setting itself.

The former is the accuracy entered by the operator for each data item when configuring its use as attached to a vehicle. The latter is the Kalman Filter setting controlled with the slider bar in the Configure Vehicle-Devices dialog box.

It is important to realize that the correct application of the Kalman Filter requires careful consideration of the actual accuracy of each data item and the relative accuracy between data items utilized. If the accuracy relationship is unbalanced, the Kalman Filter will be biased towards the data item with the overly optimistic accuracy setting.

The Kalman Filter setting itself controls how reactive to new data the filter will be. The default setting of 0.1 is applicable for many situations. The impact that the new data has in the filter is also affected by the accuracy setting for that data item. Note that the lower the value, the more smoothing that is applied.

If the Kalman Filter is set to OFF, the Velocity Filter is used. The Velocity Filter is a 'central tendency' filter, which seeks the median of the input values. The Velocity Filter does not affect position (i.e. the position of the vehicle will be the resultant of the raw data from the positioning sensors). The velocity filter will 'smooth' the velocity only. This is good for use when minor changes in velocity need to be monitored (e.g. Cable Lay Vessels and Vessel Tows where estimated time of arrival is important).

Gyro Requirements:

A Doppler speed log unit provides WinFrog with fore/aft and port/starboard (and in some cases, up/down) velocities. For use in the Kalman Filter, these are converted to Northing and Easting velocity vectors. Therefore, it is necessary to have a reasonably accurate and calibrated vehicle heading source to enable the transformation of the velocities from a vehicle based X/Y reference frame to an absolute North/East reference. The heading data used is that which is configured for the vehicle, including any offsets applied in the associated HEADING data item configuration.

At present, the vertical velocities are not utilized within WinFrog.

DEVICE CONFIGURATION INSTRUCTIONS

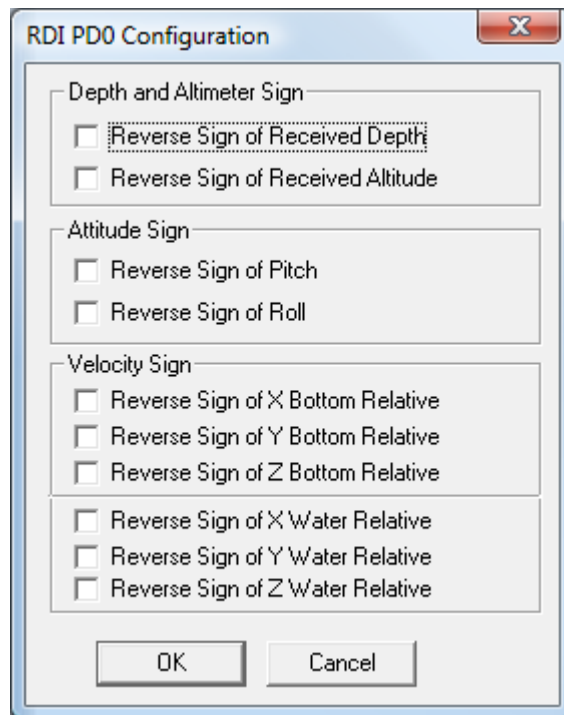
WINFROG I/O DEVICES > EDIT I/O:

Serial

Configurable Parameters

WINFROG I/O DEVICES > CONFIGURE DEVICE:

The RDI PD0 device must be configured at the I/O Device window level. The RDI PD0 Configuration dialog box appears below.



Depth Sign:

This is used to change the sign of the value. WinFrog expects that depths are positive, and that elevation above the water is positive and below is negative. Thus elevation has the opposite sign to depth. Use this dialog to ensure the sign used is correct. The corrected value is saved to the RAW files.

Attitude Sign:

WinFrog expects that bow up is positive pitch and port up is positive roll. Depending on the installation of the sensor, the signs may be reversed. Use these check boxes to correct the signs of pitch and roll accordingly. The corrected values are saved to the RAW files.

Velocity Signs:

WinFrog expects that the forward or Northerly velocity sign is positive and that the starboard or Easterly velocity sign is positive. Use these check boxes to adjust the signs as required. The corrected values are saved to the RAW files.

WINFROG VEHICLE > CONFIGURE VEHICLE DEVICES > DEVICE DATA ITEM > EDIT:

Adding the RDI device creates four data items: SPEED LOG, HEADING, ATTITUDE, and ROVDATA. Once the data items have been added to the vehicle, they must be edited to suit the application.

Data item: SPEED LOG, RDI PD0, SPEED LOG

The SPEED LOG data item must also be edited once it is added to a vehicle's device list. Highlight the SPEED LOG data item in the vehicle's device list and click the Edit button. The Configure Speed Log dialog box appears as seen below.

Configure Speed Log [?] [X]

Calculation
 Primary
 Secondary

Accuracy
Device Accuracy
0.20 m/s

Filter and Gating Control
 Apply Filtering
 Apply Gating
Gate Width (m/s) 5
5 Filter/Gate History Length

NOTE:
When applying the Filtering and/or Gating,
WinFrog utilizes the data history.
The same setting is used for both.

Offsets
Fore/Aft 0.00m Port/Stbd 0.00m Height 0.00m

OK Cancel Help

Calculation:

Set to Primary if you wish the Doppler data to be used to assist the position of the vehicle.

Accuracy:

Accuracy of the Doppler speed logs in m/s. The default is 0.2. Change this only with caution and knowledge of the results.

Apply Filtering:

Controls the filtering of the raw Doppler data prior to its use in the Kalman Filter. If selected, a central tendency filter (which seeks the median of the input values) is applied to the data using the number of samples defined in the *Filter/Gate History Length*, the result of which is used for input to the Kalman Filter.

Apply Gating:

Controls the gating of the raw data prior to its use in the Kalman Filter. If selected, the new data is tested against the data history based upon the number of samples defined in the *Filter/Gate History Length*. If it exceeds the gate limits, the data is rejected.

Gate Width:

Defines the gating limits in m/s, the value must be determined by monitoring the data.

Filter/Gate History Length:

Defines the number of samples (minimum 3, maximum 30) to be used for both the central tendency filtering and the gating. This setting must reflect the application, environment and the Doppler performance. It depends upon balancing the need to smooth the data and the required responsiveness to real changes in the data. The longer the filter, the smoother the result, however, the result will be less responsive to the actual dynamics of the vehicle. The shorter the filter, the less smooth the results, and the more responsive to the actual dynamics of the vehicle.

It should be noted that if the *Apply Filtering* option is selected, but not the *Apply Gating* option, a default gating value of 10m/s is used for the purpose of utilizing the filtering function.

Offsets:

Not applicable for this operation.

CONFIGURATION DETAILS:

Under this section we will attempt to provide further information of the devices that may benefit from the Speed Log input.

The correct use of the SPEED LOG data item is dependent upon the correct use of associated data items and the configuration of the associated vehicle Position Calculations. In a typical situation, the Doppler speed log is mounted on an ROV being positioned with USBL, so this is the setup that will be examined here.

USBL BEACON Data Type Configuration:

The ROV will be positioned using a USBL BEACON data item.

Configure USBL Beacon

Calculation: Primary Secondary

Accuracy: 10.00m

Error Detection: On Off

Deskewing Options

Deskew Beacon Timestamp
The data signal reception time is corrected to the signal transmission time based on sound velocity and slant range.

Deskew Hydrophone Position
The hydrophone position is deskewed to the appropriate beacon epoch based on the hydrophone vehicle's speed and CMG. If not on, the last updated position for the hydrophone is used regardless of age.

Code: 1

ROV Depth from USBL: Yes No

LBL Calibration: Use For Calibration

Graphics: Off On

Offset, from the CRP

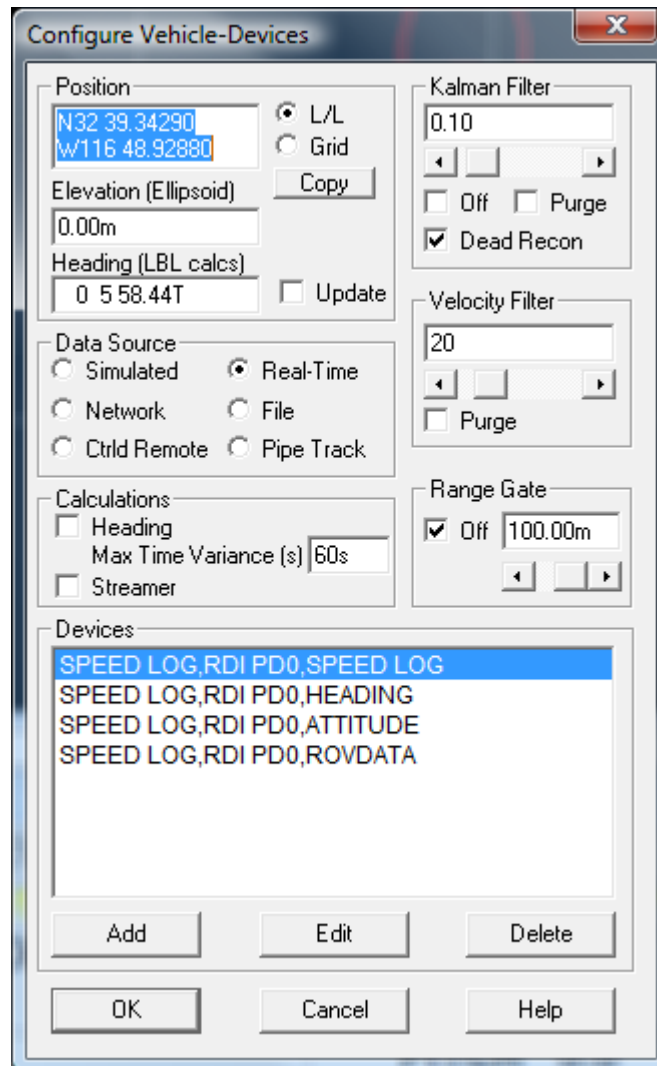
Fore/Aft	Port/Stbd	Height (+ above CRP)
0.00m	0.00m	0.00m

OK Cancel Help

The *Accuracy* is the critical setting. This is generally between 7-15m, depending upon the performance of the USBL system. The lower the value, the greater the influence of the USBL data in the Kalman Filter. The higher the value, the less the influence of the USBL data in the Kalman Filter.

Vehicle Calculations Configuration - Kalman Filter:

Use the Configure Vehicle-Devices dialog box to configure the Kalman Filter and the Position Gating.



In order to utilize the SPEED LOG data in the determination of the vehicle position, the Kalman Filter must be on, i.e. not checked *Off*.

The responsiveness of the filter to new data is controlled with the untitled numerical entry in the *Kalman Filter* panel. This value can be entered directly in this box, or controlled with the slider. The smaller the number, the less responsive to new data the filter is. Again, the default is 0.10 and this is appropriate for the majority of applications. In noisy environments on a vehicle with a low dynamics, this can be reduced. Similarly, with good data on a vehicle with high dynamics, this can be increased. However, changes to this value should be made and monitored carefully to ensure that an inappropriate filter is not used. In general, this value will not be less

than 0.05, or greater than 0.4. For ROV operations, a range of 0.10 to 0.30 is reasonable.

Vehicle Calculations Configuration: Range Gate:

The *Range Gate* setting is used not just for gating ranges, but position data also. It is an invaluable tool when positioning with USBL. This should be set to a value in keeping with the performance of the USBL system. The default of 100m is much too large to be of any use with the USBL. A value of 20m is a reasonable initial setting to use.

Resetting of the Vehicle's Position:

Based upon the monitoring of *ghost vehicles* (see below), you will be able to determine if the actual ROV position has been overly and incorrectly biased by either the doppler or the USBL to the point where it requires correction. This can be accomplished in several ways.

Purging the Kalman Filter:

From the Configure Vehicle-Devices dialog box, select the Purge checkbox in the Kalman Filter panel and exit this dialog with OK. This will reset the Kalman Filter and purge the *history*. The positioning will start afresh with the input of new data of any type currently configured to *Primary* for that vehicle.

Update the Vehicle Position:

Enter or copy a new initial position in the Configure Vehicle-Devices dialog box and select the Update checkbox. This will force the vehicle to this position and the Kalman Filter will take over.

Disabling a Data Source:

Either the SPEED LOG or USBL BEACON data item can be removed from the solution by setting them to *Secondary*. The affect of the data will remain for a short period due to the fact that the Kalman Filter uses history to predict the future.

Monitoring the Application of the Speed Log:

The monitoring of the speed log device falls into three categories:

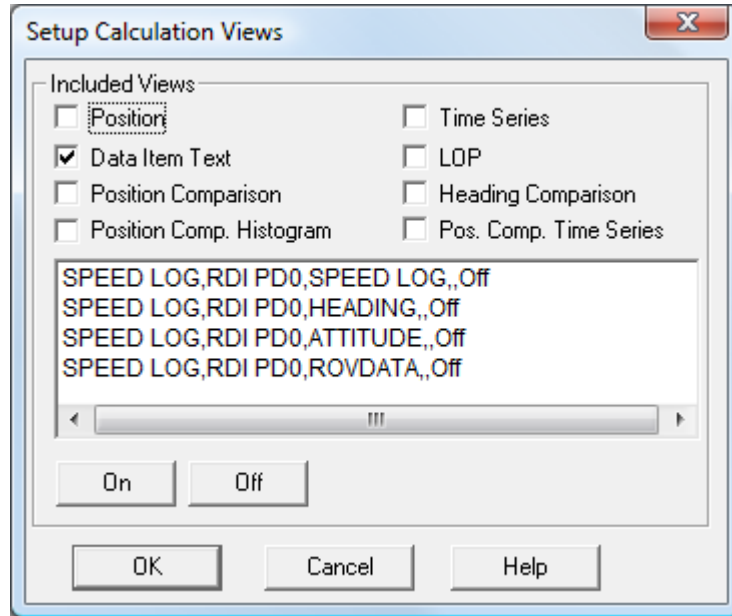
1. Input of data.
2. Filtering and gating of the speed log data, prior to use in the Kalman Filter.
3. Affect of the speed log data on the position.

Monitoring Device Input:

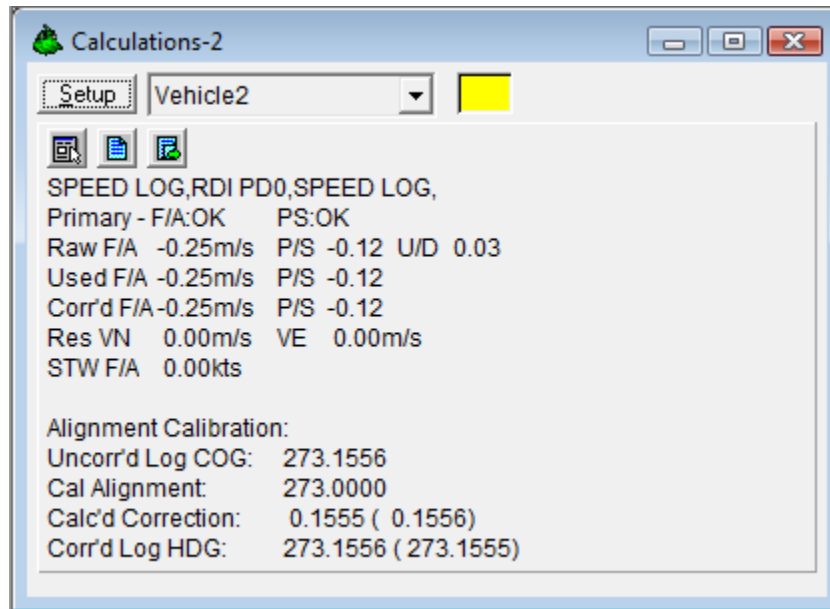
WinFrog does not provide alarms when a device stops updating. Therefore, the device input should be checked at the I/O Device Window / Decoded Data tab regularly. The time of data displayed for every device will indicate if data is being received.

Monitoring the Filtering and Gating of the SPEED LOG Data Item

To monitor the actual use of the speed log data as attached to the vehicle, a Calculation window should be opened. In this window, select the appropriate vehicle from the dropdown list. Then using the Setup button to the left of the vehicle dropdown list, access the configuration dialog box shown below.



Select the *Data Item Text* checkbox, highlight the SPEED LOG item and then click the *On* button. Exit with *OK*. The speed log data can then be monitored in this Calculation window, as shown below.



The information provided in this window is as follows:

- Data item and device name
- Calculation setting (Primary/Secondary) and the status of the F/A and P/S velocity data. The status can be *OK*, *Gate* or *Bad*. OK indicates that the data is valid and used. Gate indicates that the data has been gated and is not used. Bad indicates that the data as received from the speed log was either invalid, or not an *Over Ground Speed*.
- The raw F/A, P/S and Up/Down Over Ground velocities in m/s.
- The F/A and P/S velocities used in the Kalman Filter. If the speed log data filtering is turned on, these will be the results of the filter. If not, these will be the raw data repeated.
- The Northing and Easting velocity vector residuals in m/s. The residuals are the Kalman Filter results minus the used data.
- The *Speed Through Water*, if the device also provides (or only provides) this value
- The calculated correction (Calc'd Correction) can be viewed in this window. This correction value can be entered in the Alignment Correction tab.

This window provides you with the means to observe the results of the gating and filtering. Changes to the SPEED LOG data item configuration are required if excessive gating occurs or the filtered data does not reasonably represent the raw data.

It should also be noted that a time series plot of the *used* fore/aft velocity (and *Speed Through Water* if available) can be displayed by selecting the *Time Series* checkbox in the Calculation window configuration dialog box.

Monitoring the Impact of the SPEED LOG Data Item:

The monitoring of the impact of the SPEED LOG data item on the positioning of the vehicle requires the setting up of *ghost* vehicles.

To monitor the performance of the SPEED LOG data only, add a vehicle to WinFrog, add the appropriate HEADING and SPEED LOG data items. Make sure to configure the vehicle's positioning parameters (i.e. Kalman Filter and Range Gating) and the data items, exactly as configured on the actual ROV Vehicle. When running with only a SPEED LOG data item as a source of positioning data, the vehicle must be given a starting positioning. Do this by copying the current ROV vehicle's position into the appropriate edit box in the *Configure Vehicle-Devices* dialog box and select the *Update* checkbox. Though the vehicle's position will always appear as yellow in the Vehicle Window, it will position based upon the Doppler speed log data.

To monitor the performance of the USBL BEACON data only, add a vehicle to WinFrog, add the appropriate HEADING and USBL BEACON data items. Make sure to configure the vehicle's positioning parameters (i.e. Kalman Filter and Range Gating) and the data items exactly as configured on the actual ROV Vehicle.

To minimize the distraction of the *ghost vehicles* on actual navigation and tracking, you may wish to do the following. From the *Vehicle Presentation* configuration option for the ghost vehicles, turn *Vehicle Window Data* to **off** to prevent the display of the vehicle data in the Vehicle window(s). You may also wish to limit the vehicle shape to a simple cross in a different color to make graphical comparison easier.

The difference in positioning between these vehicles and the actual vehicle will illustrate the affect the use of the SPEED LOG data is having in the Kalman Filter.

Resetting of the Vehicle's Position:

Based upon the monitoring of the aforementioned *ghost vehicles*, you will be able to determine if the actual ROV position has been overly and incorrectly biased by either the doppler or the USBL (to the point where it requires corrective actions). This can be accomplished in the following ways:

Purging the Kalman Filter

From the *Configure Vehicle-Devices* dialog box, select the *Purge* checkbox in the Kalman Filter panel and exit this dialog with *OK*. This will reset the Kalman Filter and purge the *history*. The positioning will start afresh with the input of new data of any type currently configured to *Primary* for that vehicle.

Update the Vehicle Position

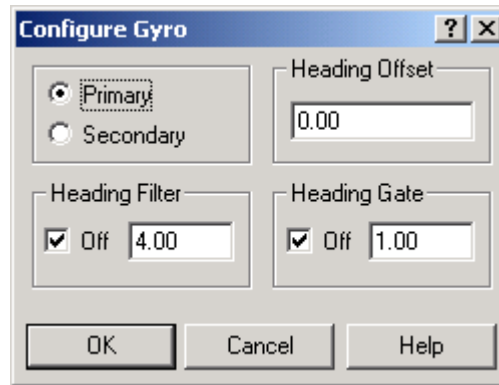
Enter or copy a new initial position in the *Configure Vehicle-Devices* dialog box and select the *Update* checkbox. This will force the vehicle to this position and the Kalman Filter will take over.

Disabling a Data Source

Either the SPEED LOG or USBL BEACON data item can be removed from the solution by setting them to *Secondary*. The affect of the data will remain for a short period due to the fact that the Kalman Filter uses history to predict the future.

Data item: SPEED LOG, RDI PD0, HEADING

The Heading data item must also be edited once it is added to a vehicle's device list. Highlight the HEADING data item in the vehicle's device list and click the Edit button. The Configure Gyro dialog box appears as seen below.



Calculation (Primary/Secondary):

Set the type of calculation to Primary or Secondary by selecting the appropriate radio button. Devices set to Primary are used to provide the vehicle with heading information. However unlike the Position data items, WinFrog does not calculate a weighted mean solution for multiple Heading data items. If more than one Heading data item is set to primary, the vessels heading, in WinFrog, will jump back and forth between the two. Devices set to Secondary are simply monitored, and are not used in the vehicle's calculations.

In the case of Primary device failure, WinFrog will not automatically use the Secondary device(s). You must manually change a Secondary device to Primary status in order for it to be used in the vehicle's calculations.

Heading Offset:

A correction value (as determined from a gyro calibration) can be input in the Heading Offset box. This value is added to the heading value from the Device to provide a corrected heading for the vehicle. Note that positive or negative values can be entered.

Heading Filter/Heading Gate:

The Heading Filter is used to "smooth" heading values used by the vehicle. The value entered in the Heading Filter indicates the number of headings that will be used to predict the next heading value. The larger the value entered, the "heavier" the filter will be – i.e. the slower the vehicle's heading will respond to changes.

The heading gate defines a tolerance value to limit the use of anomalies in gyro readings. If the next observed gyro value received falls outside the specified range of predicted values (i.e. plus or minus the entered value), the value will not be used.

Data item: SPEED LOG, RDI PD0, ATTITUDE

The Attitude data item must also be edited once it is added to a vehicle's device list. Highlight the Attitude data item in the vehicle's device list and click the Edit button. The Attitude dialog box appears as seen below.

The screenshot shows the 'Attitude' dialog box with the following settings:

- Application Control:** On, Off. Do not use data if error flag is set.
- Pitch Controls:** Pitch Correction (d.dd) (+ is Bow Up) is 0.000000. Filter incoming data. Filter Length (Max 30 samples) is 30. Data rejection threshold +/- the filter median value (d.dd) is 10.00.
- Roll Controls:** Roll Correction (d.dd) (+ is Starboard Down) is 0.000000. Filter incoming data. Filter Length (Max 30 samples) is 30. Data rejection threshold +/- the filter median value (d.dd) is 10.00.
- Primary Attitude Device Selection:** (Empty dropdown)
- Primary Device Auto Switch:** On, Off. Age of data when switch occurs is 20.00.
- Offsets:** Fore/Aft: 0.000, Port/Stbd: 0.000, Height: 0.000.
- Acoustic Options:** (Empty dropdown)

Attitude

By default, the sensor mode is off, meaning that data from the device will not be used in the vehicle's calculations. To turn the sensor on, and begin using the inclination corrections in the position output, click the 'On' radio button.

Error flag testing

The error flag check box is applicable to those devices that output a code indicating the data is either good or bad. If checked and the device supports such a code in its telegram, WinFrog will look at the code and if the data is indicated as bad, WinFrog will not use the data.

Sensor Update Frequency Rate

If the associated attitude sensor has a high frequency update rate (e.g. 10Hz and higher) it is appropriate to extract attitude data for application by either interpolating or extrapolating for a given epoch. In this case, the *High frequency update* option should be selected. Some attitude sensors have slow update rates, in particular those installed in acoustic transponders that require interrogation. For these sensors interpolation/extrapolation can produce a bad value as there is insufficient information to determine the correct shape of the curve (aliasing). Thus the most current attitude needs to be used. In this case, select the *Low Frequency update* option. This option applies to the use of the attitude data by the following data items:

- POSITION
- ELEVATION
- ALTITUDE
- XPONDER
- LBL TRANSCIEVER
- PROFILE

Pitch and Roll

There are two control groups, one for each of pitch and roll. Correction values can be added in this section of the window. The correction values (entered in units of degrees-decimal degrees) are added to the raw pitch and roll values received from the device before the data is applied to the vehicle's calculations. Ensure that entered values adhere to the sign convention used by WinFrog. You can verify that the corrections are entered properly by viewing the pitch and roll values in the I/O Device window and the Vehicle Text window.

Filtering

Additionally you may filter the incoming values to remove extraneous noise or spikes – check boxes are provided to switch this feature on or off. A filter length (up to 30 samples) and a threshold value (applied to the median of the samples in the filter to obtain lower and upper bounds) can be entered. Any pitch or roll values outside of the bounds are rejected and not used in the vehicle calculations, but will be recorded in the RAW files. If either one of pitch or roll is rejected, both values are ignored, although you may set up the filtering parameters for them separately. The status of the filters, including the current valid range for each of pitch and roll, and the percentage of values rejected, can be viewed in the calculations window, selecting the appropriate ATTITUDE data item.

Important:

Do not enable filtering unless there is a high enough data rate (say 10hz) to correctly determine the shape of the curve. Essentially, if the low frequency update rate is selected above, do not enable filtering.

Primary Attitude Device Selection

If more than one attitude device is present, you may select one of them to be primary and the others to be secondary and allow WinFrog to automatically switch between them should the primary system stop sending data or has bad data. There must be at least two attitude data items added to the vehicle to use this feature. (Note: The attitude and offset data displayed in this dialog is for the attitude device corresponding to the data item that is being edited. Selecting a Primary Attitude Device from the drop down list does not affect these values for any attitude device in the list. Every attitude device needs to be set up for its own corrections and offsets.)

Primary Device Auto Switch

Select the On radio button to turn on this feature. Then enter the time out time in the edit box. If WinFrog does not receive data from the primary attitude device, or if it receives bad data for this length of time, it will switch to the next secondary that is enabled and has good data.

Auto Switch Feature Usage

To use this feature first turn the sensor on as described in the Attitude section above. Next, select the attitude device that you wish to be primary from the drop down list box. Then turn the primary device auto switch on and enter the time out time. Then edit all the other attitude data items and enable them in the Attitude group box. Note that the same selected primary will be displayed for all attitude data items; similarly, the automatic feature will be turned on and the time out time will be the same. However, you must individually enable each attitude device in the Attitude group box.

Offsets

These are not applicable in this case.

Acoustic Options

This applies to long base line acoustic transponders that have inclinometers. See the LBL Acoustics chapter for more information.

Data item: SPEED LOG, RDI PD0, ROVDATA

This data item is designed to read specific ROV type data from this device. Highlight this data item in the ROV's device list and click the Edit button to open the Configure ROV dialog box as seen below.

Configure ROV

Primary Data Source

Altitude Jet data Pressure
 Burial Depth Depth of ROV Oxygen
 Cathode Probe Temperature Salinity
 Sound Velocity Conductivity Analogue

Graphics

On Off

Odometer Based Positioning Jet Depth Offset

Odometer (m) Added

Depth and Altimeter Sensor Configuration

Use altitude and depth as corrected by the device.
Correct attitude and depth.
 The default attitude data is from this device. If another attitude source is active, it will be used.
 Use offsets from the Device configuration.
 Use following offsets.

Altitude Sensor

Fore / Aft	Port / Starboard	Up / Down
<input type="text" value="0.00m"/>	<input type="text" value="0.00m"/>	<input type="text" value="0.00m"/>

Depth Sensor

Fore / Aft	Port / Starboard	Up / Down
<input type="text" value="0.00m"/>	<input type="text" value="0.00m"/>	<input type="text" value="0.00m"/>

OK Cancel

Primary Data Source Group Box

Checking any of the check boxes in this group causes the particular data to be assigned to the vehicle. If it is not checked it will still be stored in the raw record. Leaving an item checked for which there is not data from this device will cause it to be applied, thus possibly overwriting data from another device. Consequently all values not available should be unchecked.

Altitude:

Checking this will result in the value calculated from the weighted vertical ranges minus the altitude offset also found on this dialog being applied to the vehicle. This value can be displayed in the Vehicle Text window as ROV Alt.

Unchecked will result in no assignment of the vehicle's altitude from this device. The raw data is still always recorded.

Burial Depth, Cathode Probe, Jet Data, Conductivity, Oxygen, and Analogue:

Not applicable to this device, leave unchecked.

Depth of ROV:

Checking this will cause the depth of this vehicle's CRP to be determined from the observed depth value found in the PD0 telegram plus the depth offset below. This vehicle's elevation will be the negative of this value.

Temperature, Pressure and Salinity:

Check these values if you want this data assigned to the vehicle. It will also appear in the event records.

Graphics:

Select the On radio button to display the device name and a square at the location of the tracked offset, within the Graphics and Bird's Eye windows.

Odometer Based Positioning:

Not applicable to this device.

Jet Depth Offset:

Not applicable to this device, leave at 0.

Depth and Altimeter Sensor Configuration:

For all ROV devices except Deep Blue ROV, the radio button settings cannot be changed.

Vertical offsets of the altitude and depth sensors, relative to the CRP, can be entered here. The Altitude Offset is the vertical distance (positive up) from the ROV's CRP to the acoustic beacon tracking the seafloor. The Depth Offset is the vertical distance (positive up) from the ROV's CRP to the sensor that provides depth information of the ROV.

The offset position will be corrected for pitch and roll then the vertical offsets will be applied to determine the depth of the ROV and height of the ROV above the bottom.

TELEGRAM FORMATS

The PD0 format is binary and described in RDI's document [Workhorse Commands and Output Data Formats](#)